


Outdoor ground covering

# - TERRACE

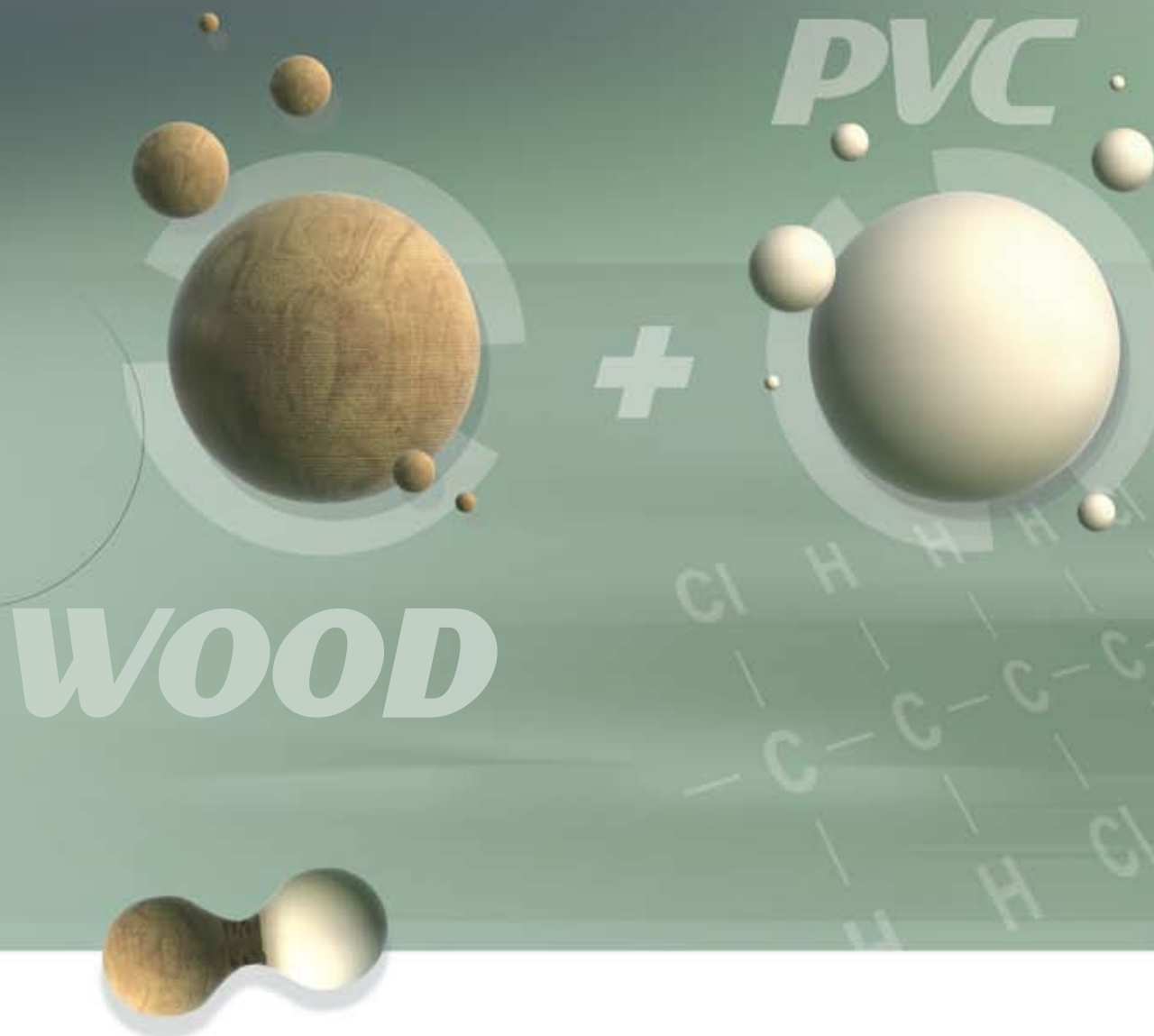


# **TWINSON®**

## ***BEST OF BOTH WORLDS***

Welcome to the world of Twinson®, where nature and technology go hand in hand. Twinson® is made of **wood and PVC**. By combining the advantages of both materials in a single new base material, Twinson® gives you the **best of both worlds** - the **natural appearance** and **warm feel of wood** as well as the **low-maintenance** and **durability of PVC**. Twinson® is **100% recyclable** - as well as being an **environmentally friendly** alternative to tropical hardwood. While tropical hardwood is only available in the threatened rain forests, Twinson® contains PEFC pine, which grows quickly in forests that are continually being replanted. The extraordinary qualities of Twinson® -Terrace are guaranteed by the **German VHI quality label**.







**TWINSON**<sup>®</sup> combines all the advantages of wood and PVC:



- |   |  |
|---|--|
| ● <b>natural appearance</b>                         | ● low maintenance                            |
| ● <b>splinter free</b>                              | ● water resistant                            |
| ● resistant to insects                              | ● easy to fit                                |
| ● does not split                                    | ● robust                                     |
| ● <b>environmentally friendly (100% recyclable)</b> | ● assembly with concealed system             |
| ● durable   | ● <b>high slip resistance, even when wet</b> |

The general conditions with regard to warranty are applicable.

## - TERRACE

### *YOUR COMFORT IS ASSURED*

Twinson® gives you all the benefits of wood while enjoying the unique properties of PVC. By combining wood and PVC in a single new base material, -Terrace meets all the comfort demands you make of your patio planks. **Water resistant** and **robust, low maintenance** and **attractive**: -Terrace has everything!

Twinson® combines the **warm feel of wood and the durability of PVC**. Thanks to the natural appearance, -Terrace planks blend in perfectly with your garden. With Twinson®'s water resistance, your patio is guaranteed to stay like new, since -Terrace is **splinter and split free**.

From garden path to pond-edge, from patio to pool-side: with -Terrace you'll enjoy it all the more.




Design your terrace surface and let the -Terrace calculation software calculate all the technical requirements you need to build it.

Look at the -Terrace installation movie and look for yourself how easy it is to install.

Both tools can be downloaded free of charge from [www.twinson.net](http://www.twinson.net).

## POWER TO YOUR IMAGINATION

With Twinson® you can give your creativity free reign. From formal design to fanciful geometric shapes, with Twinson® you can achieve anything! -Terrace patio planks and finishing trims are available in 8 different natural colours from almond beige to liquorice black. With Twinson®, you can transform your patio or garden into a stylishly finished environment that you can enjoy for years to come.

0501



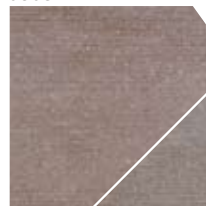
ALMOND BEIGE

0507



OLIVE GREEN

0503



HAZELNUT BROWN

0504



BARK BROWN

0509



RIVER STONE GREY

0506



APRICOT BROWN

0505




TURF BROWN

0502



LIQUORICE BLACK

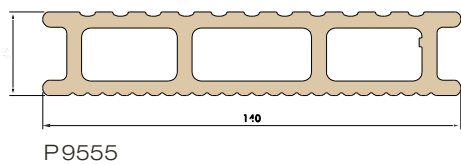
The colour samples are reproductions and can deviate from the originals. The large inset shows the natural colour which the -Terrace planks will change to over time. Twinson® is a semi natural product and therefore subject to variants in colour and character. Once the product is installed outside, the colour will start to stabilise. Planks should be mixed prior to installation to gain a natural effect. Brushed finishes and unbrushed finishes will ultimately become the same colour.

# - TERRACE

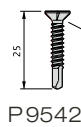
For more detailed information : [www.twinson.net](http://www.twinson.net)



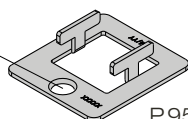
P9556



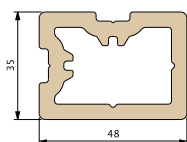
P9555



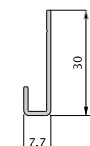
P9542



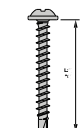
P9544 > inox A2  
P9554 > inox A4



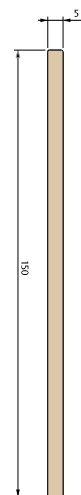
P9552



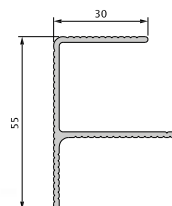
P2761



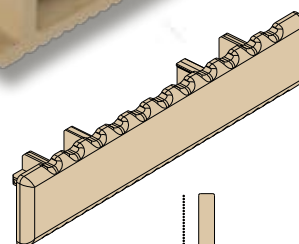
P2754



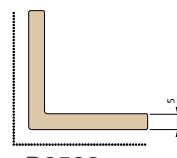
P9590



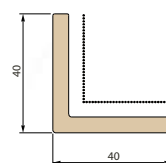
P9543



P9557



P9592

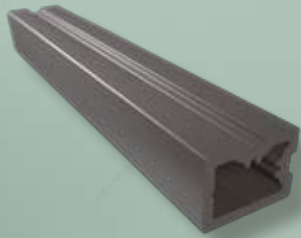


P9591

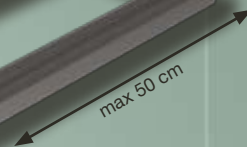
..... finished side

# YOUR CONVENIENCE TO THE FORE

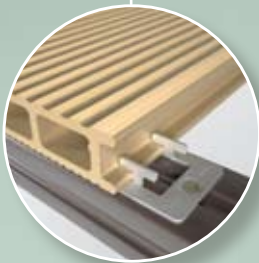
**1** Positioning the substructure



**2** Cut to size  
Choose a side of the plank

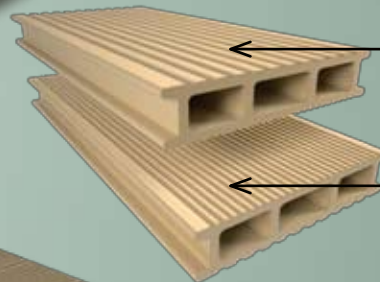


**3** Assemble with clip



Recto large lines

Verso fine lines



**4** Finished -Terrace



Silver anodized

Black anodized

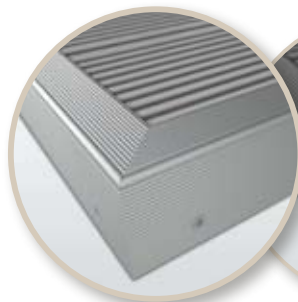
Brown anodized



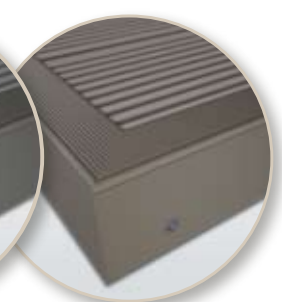
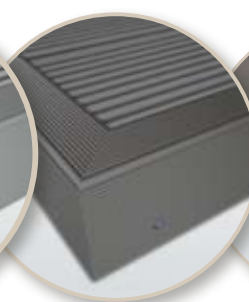
Finish with end cap



Finish with plinth



Finish with alu F-profile



YOUR DECEUNINCK PARTNER



[www.twinson.net](http://www.twinson.net)

